

Part No.	Circuit	A	B	C	LOGO Mark
1343-02D-1B-T	2	7.5	5.80	2.50	
-	3	10.0	8.30	5.00	
1343-04D-1B-T	4	12.5	10.80	7.50	SHINNING
-	5	15.0	13.30	10.00	
1343-06D-1B-T	6	17.5	15.80	12.50	
1343-07D-1B-T	7	20.0	18.30	15.00	
-	8	22.5	20.80	17.50	
-	9	25.0	23.30	20.00	
-	10	27.5	25.80	22.50	
-	11	30.0	28.30	25.00	
-	12	32.5	30.80	27.50	
-	13	35.0	33.30	30.00	
-	14	37.5	35.80	32.50	
-	15	40.0	38.30	35.00	

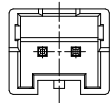
Unless otherwise specified tolerance:

X.	±0.50	X.°	±3°
.X	±0.38	.X°	±2°
.XX	±0.25		

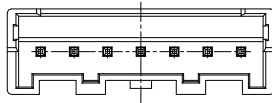
- Performance characteristics:
- Main body part material
Insulator: LCP Natural UL94V-0
Contact terminal: Brass, 1.27 μm Min. Ni under plated, outer plating matter Sn 2.54 μm Min.
 - Electrical requirements:
Current rating: 3 A (AWG22)
Voltage rating: 250 V
Contact resistance: ≤10 mΩ
Insulation resistance: ≥1000 MΩ
Withstanding voltage: 1000 Vr.m.s, 1mA, 60s
 - Mechanical requirements
Retention force: ≥5 N/pin
 - Environment specification
Working temperature: -40°C ~ +105°C
Humidity: ≤93% at 40°C
Resistance to soldering heat: 265 ± 5°C, 10s
 - Packing & storing
Method of packing: Tray, outer box
Storing condition: Temperature of -10°C ~ +40°C below 80% relative humidity
 - Style of installation: Solder PCB installation (THT)
 - To prevent the pollution of the environment product info
RoHS agreement: In line with the European Union RoHS.

①	1	620996	Yong Zhang	2023.10.08	2.50mm Pitch wafer straight male	SL0.1343.061			
Mark	NO.	File NO.	Signature	Date		Projection	Rev.	Weight	Scale
DRAW	CHK	James Zhang 2021.07.16			1343-XXD-1B-T		A1		
MAN	STD					All Dimensions in mm Sheet 1 of 2			
APP						SHENZHEN SHINNING ELECTRONIC CO.,LTD.			

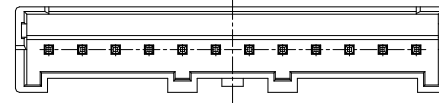
Diagram of All Circuit



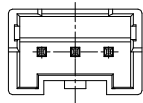
2PIN



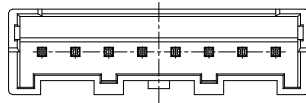
7PIN



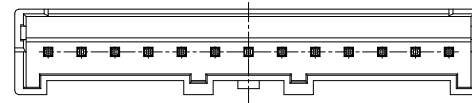
12PIN



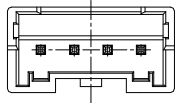
3PIN



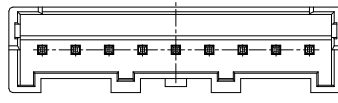
8PIN



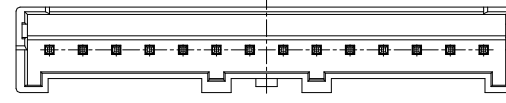
13PIN



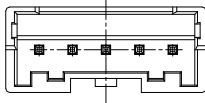
4PIN



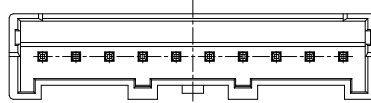
9PIN



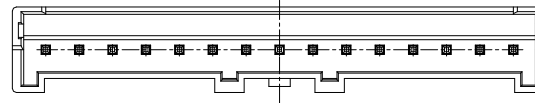
14PIN



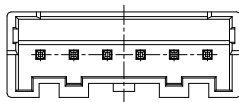
5PIN



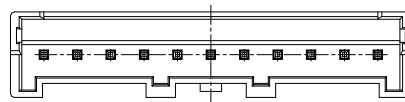
10PIN



15PIN



6PIN



11PIN

Unless otherwise specified tolerance:

X.	±0.50	X.°	±3°
.X	±0.38	.X°	±2°
.XX	±0.25		

①	1	620996	Yong Zhang	2023.10.08
Mark	NO.	File NO.	Signature	Date
DRAW			James Zhang	2021.07.16
CHK				
MAN				
STD				
APP				

2.50mm Pitch wafer straight male

1343-XXD-1B-T

SL0.1343.061

Projection	Rev.	Weight	Scale
	A1		
All Dimensions in mm		Sheet 2 of 2	
SHINNING SHENZHEN SHINNING ELECTRONIC CO., LTD.			