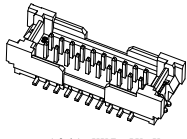
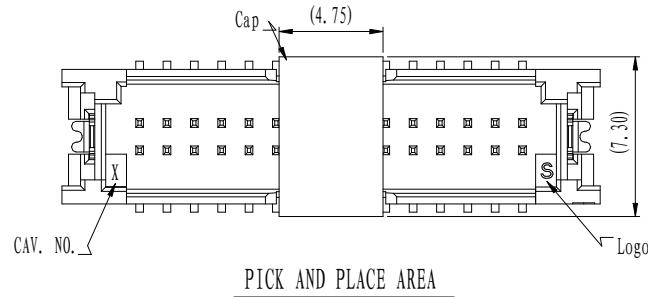
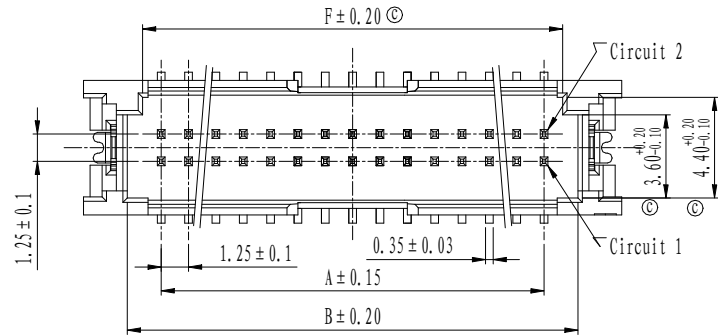
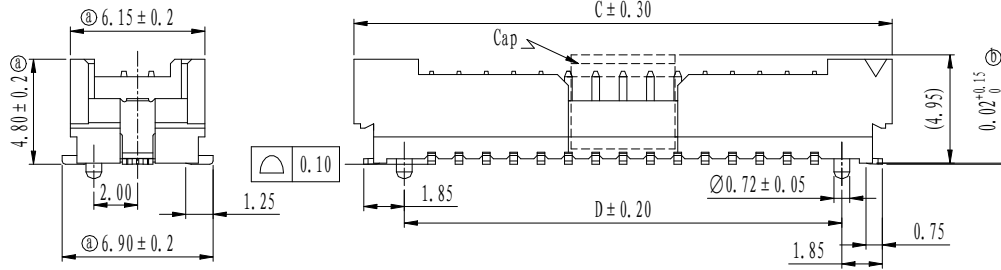


1341-XX7-1X-X
With Cap

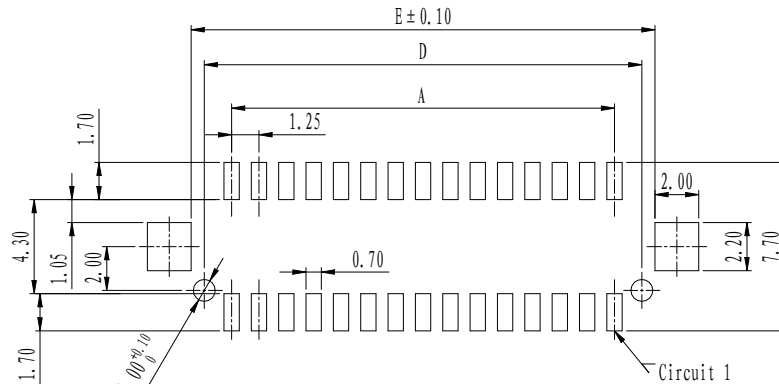


1341-XX7-5X-X
Without Cap



PICK AND PLACE AREA

Part No.	No. of POS	A	B	C	D	E	F
1341-407-XX-X	2X20=40	23.75	26.85	30.85	26.25	27.45	25.45
1341-347-XX-X	2X17=34	20.00	23.10	27.10	22.50	23.70	21.70
1341-307-XX-X	2X15=30	17.50	20.60	24.60	20.00	21.20	19.20
1341-207-XX-X	2X10=20	11.25	14.35	18.35	13.75	14.95	12.95
1341-107-XX-X	2X05=10	5.00	8.10	12.10	7.50	8.70	6.70



P.C.B LAYOUT
TOP VIEW
Tolerance: ±0.05

Performance characteristics:

- Main body part material
Insulator: See part number rule
Contact terminal: Brass, 1.27 μm Min. Ni under plated, outer plating see part number rule.
- Electrical requirements:
Current rating: 1 A
Voltage rating: 150 V
Contact resistance: 30 mΩ Δ10mΩ
Insulation resistance: ≥500 MΩ
Withstanding voltage: 500 Vr.m.s, 1mA, 60s
- Environment specification
Working temperature: -40°C ~ +105°C
Resistance to soldering heat: 260°C, 30s
- Mechanical requirements
Insertion force: < 0.35 kgf/Pin
Extraction force: ≥0.08 kgf/Pin
Retention force: 0.25 kgf. Min.
Mechanical life: 30 cycles
- Packing & storing
Method of packing: Reel
Storing condition: Temperature of -10°C ~ +40°C
below 80% relative humidity
- Style of installation: SMT
- To prevent the pollution of the environment product info
RoHS agreement: In line with the European Union RoHS.

1341 - XX X - X X - X

Series code	Terminal number	Type code	Spec code	Plating code	Insulator material & color
	10~40	Code Definition 7 Type 7	Code Definition 1 With CAP 5 Without CAP 7 Customized	Code Definition B Matte Sn 3 μm Min. 7 Au0.38 μm Min. Sn 3 μm Min. 8 Au0.76 μm Min. Sn 3 μm Min. X Customized	Code Definition 3 LCP Black UL94V-0 N LCP Nature UL94V-0 X Customized

Unless otherwise specified tolerance:

X.	±0.50	X.°	±3°
.X	±0.38	.X°	±2°
.XX	±0.25		

Mark	NO.	File NO.	Signature	Date
Ⓒ	4	591179	James Zhang	2022.11.21
Ⓓ	1	582439	An.Cheng	2022.08.08
Ⓔ	3	518467	An.Cheng	2021.06.07
DRAW	An.Cheng 2020-10-28			
CHK				
MAN				
STD				
APP				

1.25mm SMT Ejector Header

1341-XX7-1(5)X-X

SLO. 1341. 030			
Projection	Rev.	Weight	Scale
	A3		
All Dimensions in mm		Sheet 1 of 1	
SHINNING SHENZHEN SHINNING ELECTRONIC CO.,LTD.			